

8,764,000N

8,764,500N

8,765,000N

8,765,500N

8,766,000

5.000RL

4.500RL

4.000RL

3.500RL

5.000RL

4.500RL

4.000RL

3.500RL

← SE

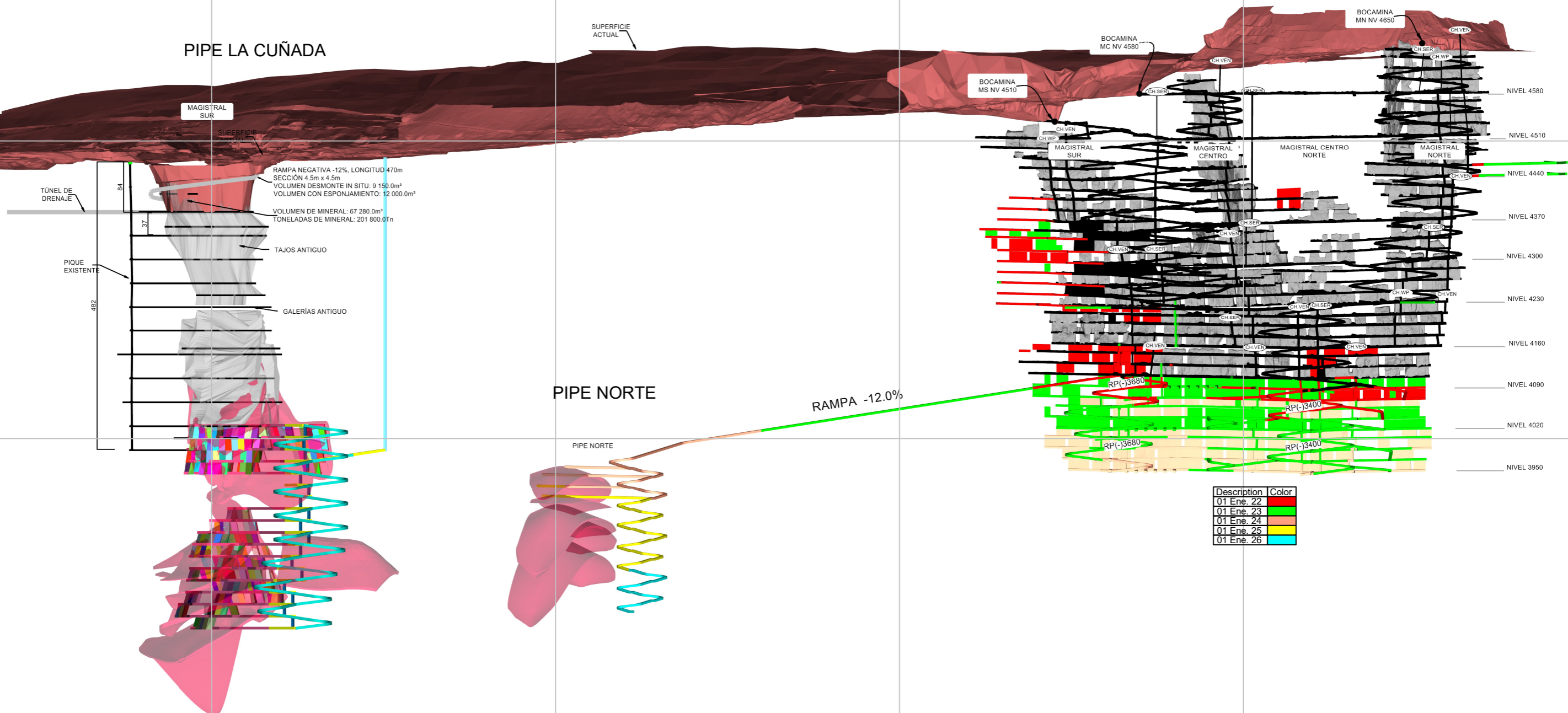
NW →

# PLANO LONGITUDINAL MINA SANTANDER

## MAGISTRAL

## PIPE LA CUÑADA

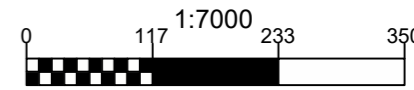
## PIPE NORTE



RANPA NEGATIVA -12%, LONGITUD 470m  
 SECCION 4.5m x 4.5m  
 VOLUMEN DESMONTE IN SITU: 9 150.0m<sup>3</sup>  
 VOLUMEN CON ESPONJAMIENTO: 12 000.0m<sup>3</sup>  
 VOLUMEN DE MINERAL: 67 280.0m<sup>3</sup>  
 TONELADAS DE MINERAL: 201 800.0Tn

Description	Color
01 Ene. 22	Red
01 Ene. 23	Green
01 Ene. 24	Orange
01 Ene. 25	Yellow
01 Ene. 26	Cyan

Section view Magistral and The Santander Pipe-1 and Pipe-2 North



8,764,000N

8,764,500N

8,765,000N

8,765,500N

8,766,000