

POSITIONED TO UNLOCK THE VALUE OF THE WORLD'S LARGEST ABOVE-GROUND METAL RESOURCE

CSE: CDPB OTC: GPPRF FRA: N8HP

January 2025



FORWARD LOOKING STATEMENTS

Certain statements contained in this presentation constitute “forward-looking information” or “forward-looking statements” under Canadian securities legislation. Generally, forward-looking information can be identified using forward-looking terminology such as “plans”, “seeks”, “expects”, “estimates”, “intends”, “anticipates”, “believes”, “could”, “might”, “likely” or variations of such words, or statements that certain actions, events or results “may”, “will”, “could”, “would”, “might”, “will be taken”, “occur”, “be achieved” or other similar expressions.

Forward-looking statements contained herein include, but are not limited to, the expectations of CDPR’s management regarding the completion of any transaction as well as the business and the expansion and growth of CDPR’s operations. These forward-looking statements speak only as of the date hereof and are based upon certain assumptions and other important fact and are subject to known and unknown risks, uncertainties and other factors discussed in the most recent continuous disclosure documents of CDPR available under CDPR’s profile at www.sedar.com. There can be no assurance that such statements will prove to be accurate, as actual results and future events could differ materially from those anticipated in such statements. As a consequence, current plans, anticipated actions, and future financial position and results of operations may differ significantly from those expressed in any forward-looking statements in this presentation. Although CDPR believes that the assumptions and factors used in preparing the forward-looking statements are reasonable, undue reliance should not be placed on these statements and forward-looking information. Except where required by applicable law, CDPR disclaims any intention or obligation to update or revise any forward-looking statement, whether as a result of new information or otherwise.

Cautionary Statement Regarding Estimates of Mineral Resource

The mineral resource estimates reported in this presentation have been prepared in accordance with the requirements of Canadian securities laws, which differ from the requirements of United States’ securities laws. The CIM Definition Standards differ from the definitions in the United States Securities and Exchange Commission (the “SEC”) Guide 7 (the “SEC Guide 7”). The terms “mineral resource”, “Measured mineral resource”, “Indicated mineral resource” and “Inferred mineral resource” are defined in NI 43-101 and recognized by Canadian securities laws but are not defined terms under SEC Guide 7 or recognized under U.S. securities laws. Readers are cautioned not to assume that any part or all of mineral deposits in these categories will ever be upgraded to mineral reserves. “Inferred mineral resources” have a great amount of uncertainty as to their existence, and great uncertainty as to their economic and legal feasibility. It cannot be assumed that all or any part of an “Inferred mineral resource” will ever be upgraded to a higher category. Under Canadian securities laws, estimates of “Inferred mineral resources” may not form the basis of feasibility or pre-feasibility studies, except in rare cases. Readers are cautioned not to assume that all or any part of an inferred mineral resource exists or is economically or legally mineable.

Mineral resources are not mineral reserves, and do not have demonstrated economic viability, but do have reasonable prospects for economic extraction. The estimate of mineral resources may be materially affected by geology, environmental, permitting, legal, title, socio-political, marketing or other relevant issues. Measured and Indicated mineral resources are sufficiently well defined to allow geological and grade continuity to be reasonably assumed and permit the application of technical and economic parameters in assessing the economic viability of the resource. Inferred mineral resources are estimated on limited information not sufficient to verify geological and grade continuity or to allow technical and economic parameters to be applied. Inferred mineral resources are too speculative geologically to have economic considerations applied to them to enable them to be categorized as mineral reserves. Under Canadian rules, estimates of Inferred mineral resources may not form the basis of feasibility or pre-feasibility studies or economic studies except for Preliminary Assessment as defined under NI 43-101. Readers are cautioned not to assume that further work on the stated resources will lead to mineral reserves that can be mined economically.

Technical Information

Alfonso Palacio Castilla, MIMMM/Chartered Engineer (CEng) and Project Superintendent for CDPR, has reviewed and approved the scientific and technical information contained in this presentation. Mr. Palacio is a Qualified Person for the purposes of reporting in compliance with NI 43-101.

EL METALURGISTA CONCESSION AND SOCIAL LICENSE



THE EL METALURGISTA CONCESSION

ONE OF THE LARGEST ABOVE-GROUND METAL RESOURCES IN THE WORLD

PROCESSING PLANTS

18K TPD permitted
Not owned by CDPR



Mineral Rights

EXCELSIOR MINERAL PILE

QUIULACOCHA TAILINGS

QUIULACOCHA HISTORICAL TAILINGS AgEq

Not 43-101 compliant. The tables are based on historical metallurgical balances and historical records. The purpose is to provide an indication of the resource that will be encountered in the tailings to gauge project potential.

Mining Period	Tonnes (000s)	Average Head Grade and Recovery				
		Cu (%)	Pb (%)	Zn (%)	Ag (g/t)	Au (g/t)
Copper Era (1906-1965)	16,369	4.0			200	3
Polymetallic Era (1952-1992)	58,299		3.3	8.6	98	
Average Recovery (%)		60%	60%	75%	60%	60%

Price (USD)		
Cu	9,000	Tonne
Pb	2,000	Tonne
Zn	3000	Tonne
Ag	30	Ounce
Au	2,500	Ounce

Mining Period	Tonnes (000s)	Estimated Average Tailings Grade					Estimated Contained Metal					
		Cu (%)	Pb (%)	Zn (%)	Ag (g/t)	Au (g/t)	Cu (kt)	Pb (kt)	Zn (kt)	Ag (Moz)	Au (koz)	AgEq (Moz)
Copper Era (1906-1965)	16,369	1.6			80	1.2	262			47	632	178
Polymetallic Era (1952-1992)	58,299		1.3	2.2	39			758	1283	73		252
												430
							18%	12%	30%	28%	12%	100%

QUIULACOCHA TAILINGS – PHASE 1 DRILLING



Sonic Drill, provides continuous, high-quality samples with minimal disturbance and no water usage, reducing environmental impact, enhancing resource recovery, and improving data quality.

QUIULACOCHA TAILINGS – SAMPLE STORAGE

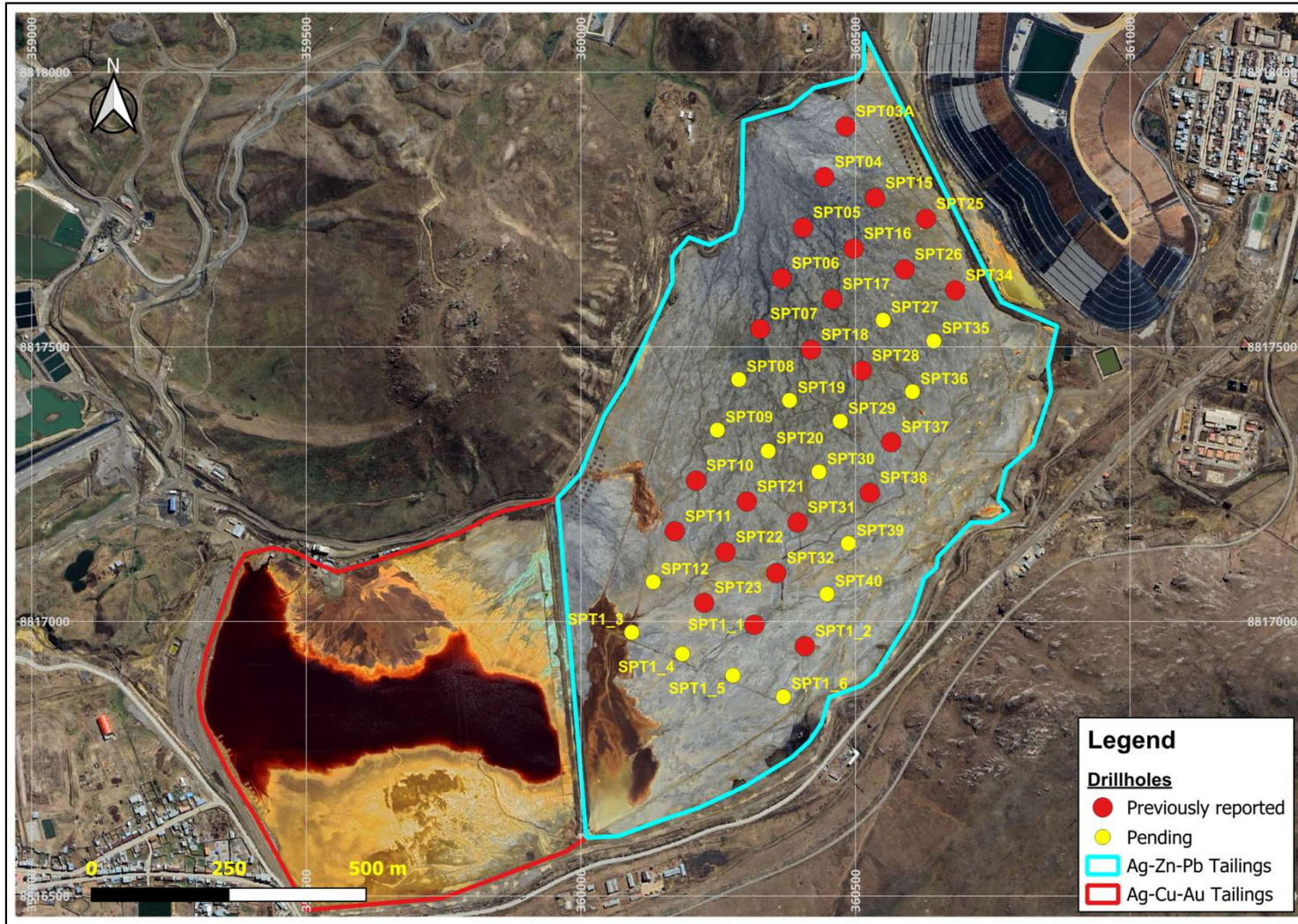


First drill samples from Quiulacocha Tailings ready for shipment to Bureau Veritas



Freezer truck on site to preserve microstructural integrity and prevent oxidation.

QUIULACOCHA TAILINGS – ASSAY RESULTS TO DATE



24 out of 40 drillholes assayed

Average grades to date

1.67 oz/t Ag

0.85% Pb

1.49% Zn

0.09% Cu

0.08 g/t Au

48.5 g/t Ga

18.8 g/t In

4.2 oz/t
AgEq*

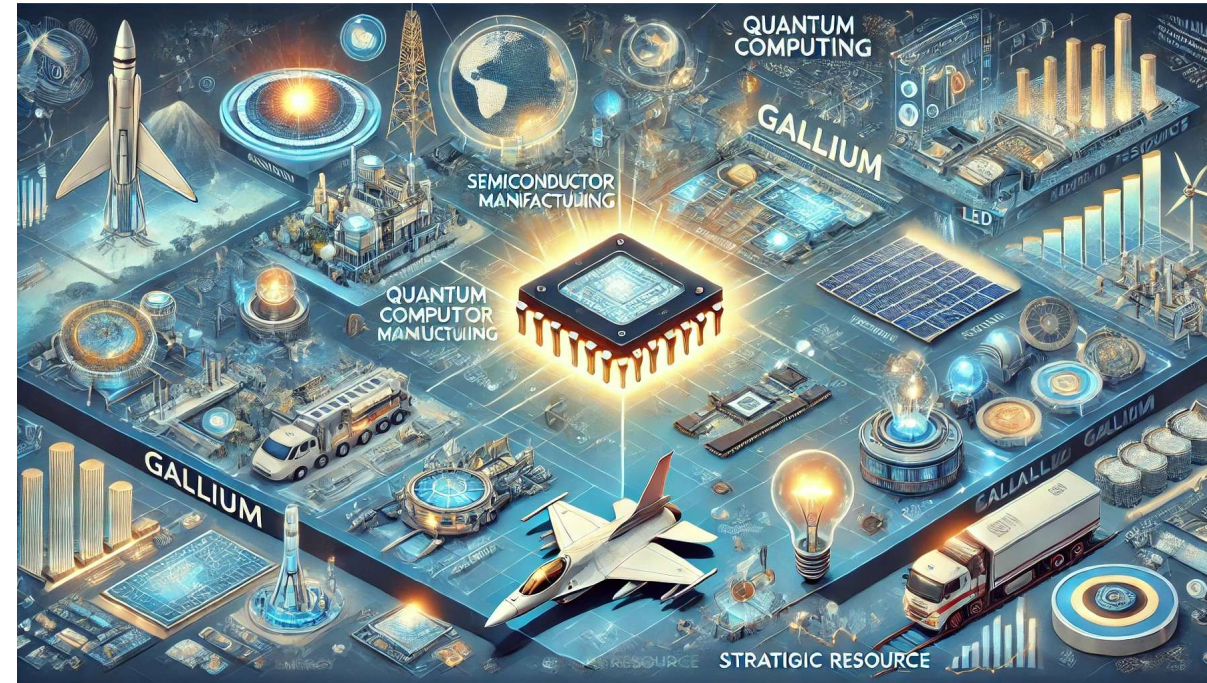
6.2 oz/t
AgEq*

* Metal prices

Ag = \$30/oz Pb = \$2,000/t Zn = \$3,000/t Cu = \$9,000/t Au = \$2,500/oz Ga = \$931/kg In = \$691/kg

GALLIUM & CRITICAL MINERALS

- » China's latest export ban to the U.S. of gallium, germanium and antimony - considered critical for national security – is China's weapon of choice in the escalating US-China tech trade war
- » Gallium is increasingly being chosen over traditional silicon for high-performance chips in semiconductor defense applications to boost performance, speed and efficiency
- » The U.S. was 100% reliant on imports of gallium last year with China accounting for 21% of metal imports, according to the United States Geological Survey (USGS)
- » The export restrictions have had a direct impact on prices for these critical minerals. Gallium jumps to highest level since 2011

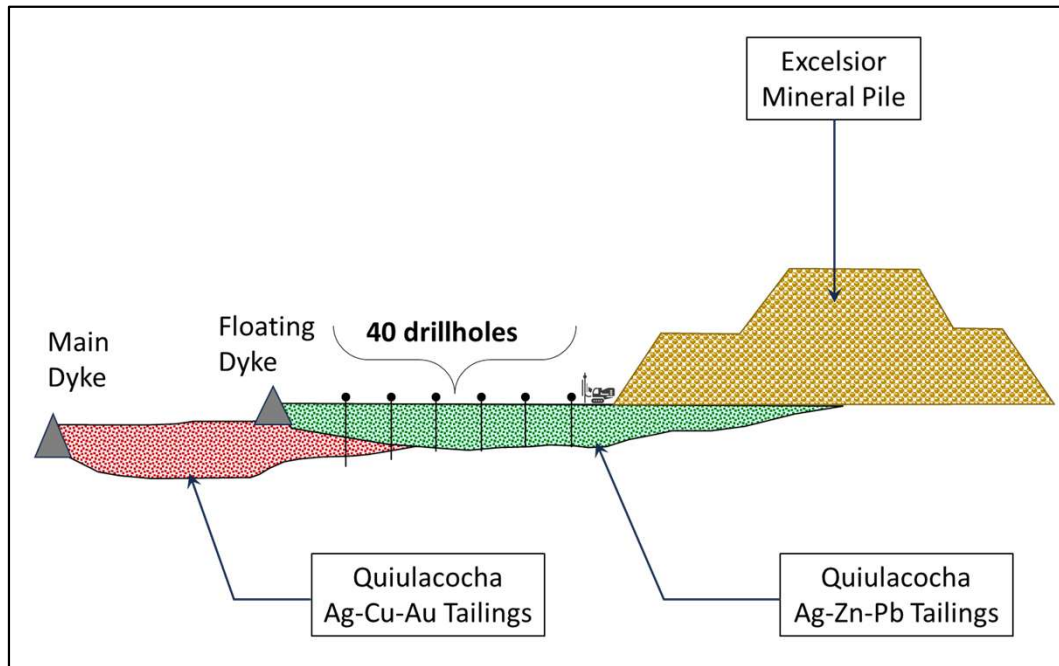


Source: StrategicMetalsInvest.com

QUIULACOCHA TSF

POTENTIAL ECONOMICS BASED ON INTERNAL PROJECTIONS

QUIULACOCHA TAILINGS – 75M TONNES



METAL	GRADE	PRICE	VALUE /TONNE
Zinc	1.49 %	\$3000	\$45
Lead	0.85 %	\$2000	\$17
Silver	1.67 oz	\$30	\$50
Gold	0.01 oz	\$2500	\$25
Copper	0.35 %	\$9000	\$32

\$169/TONNE IN-SITU

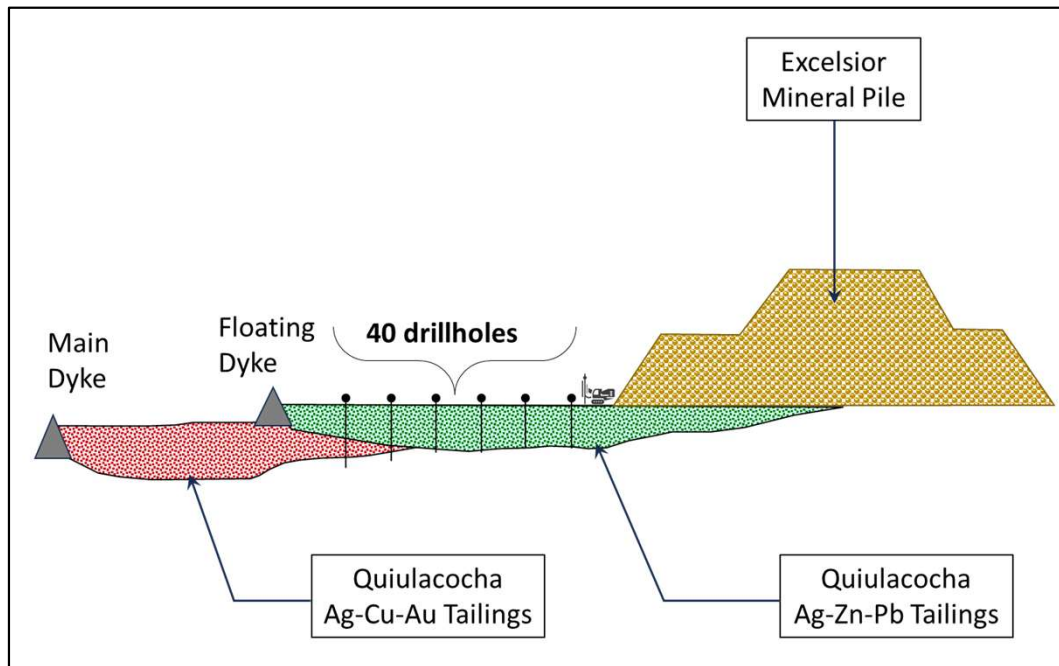
	IN-SITU VALUE /TONNE	100%	\$169
Avg. Metal Recovery of 41.5%		(x) 41.5%	\$70
Treatment/Refining Charges (Avg. 28%)		(x) 72%	\$51
NSR / tonne		(=)	\$51
	NSR/TONNE	(+)	\$51
OPEX Cost / tonne		(-)	\$10
Profit per tonne		(=)	\$41
Profit on 75M tonnes		LoM	\$3.1B
Scenario 10k tonnes per day / 3.6 tpa		Annum	\$148M

Notes: Grades based on recent assay results and historical reports
Economics are based on Internal Projections - Not NI 43-101 compliant and should only be used to gauge project potential

QUIULACOCHA TSF

POTENTIAL ECONOMICS BASED ON
INTERNAL PROJECTIONS (UPSIDE CASE)**

QUIULACOCHA TAILINGS – 75M TONNES



METAL	GRADE	PRICE	VALUE /TONNE
Zinc	1.49 %	\$3000/t	\$45
Lead	0.85 %	\$2000/t	\$17
Silver	1.67 oz	\$30/oz	\$50
Gold	0.01 oz	\$2500/oz	\$25
Copper	0.35 %	\$9000/t	\$32
Gallium	48.5 g	900/kg	\$45
Indium	18.6 g	600/kg	\$11

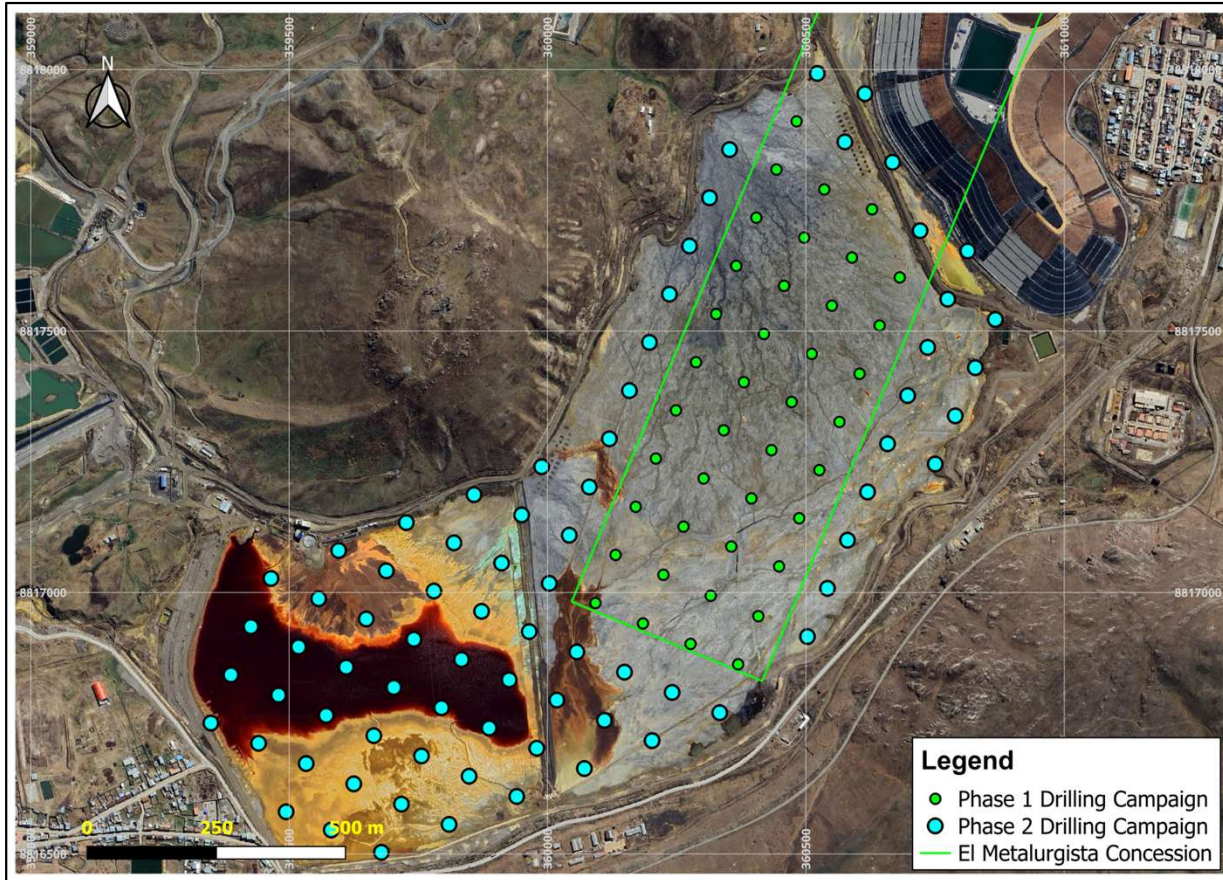
\$225/TONNE IN-SITU

	IN-SITU VALUE /TONNE	100%	\$225
Avg. Metal Recovery of 70%		(x) 70%	\$158
Treatment/Refining Charges (Avg. 28%)		(x) 72%	\$114
NSR / tonne		(=)	\$114
	NSR/TONNE	(+)	\$114
OPEX Cost / tonne		(-)	\$15
Profit per tonne		(=)	\$99
Profit on 75M tonnes		LoM	\$7.4B
Scenario 20k tonnes per day / 7.2M tpa		Annum	\$713M

**** Upside Case assumes avg. metal recovery of 70%;
processing rate of 20k tonnes per day**

Notes: Grades based on recent assay results and historical reports
Economics are based on Internal Projections - Not NI 43-101 compliant and should only be used to gauge project potential

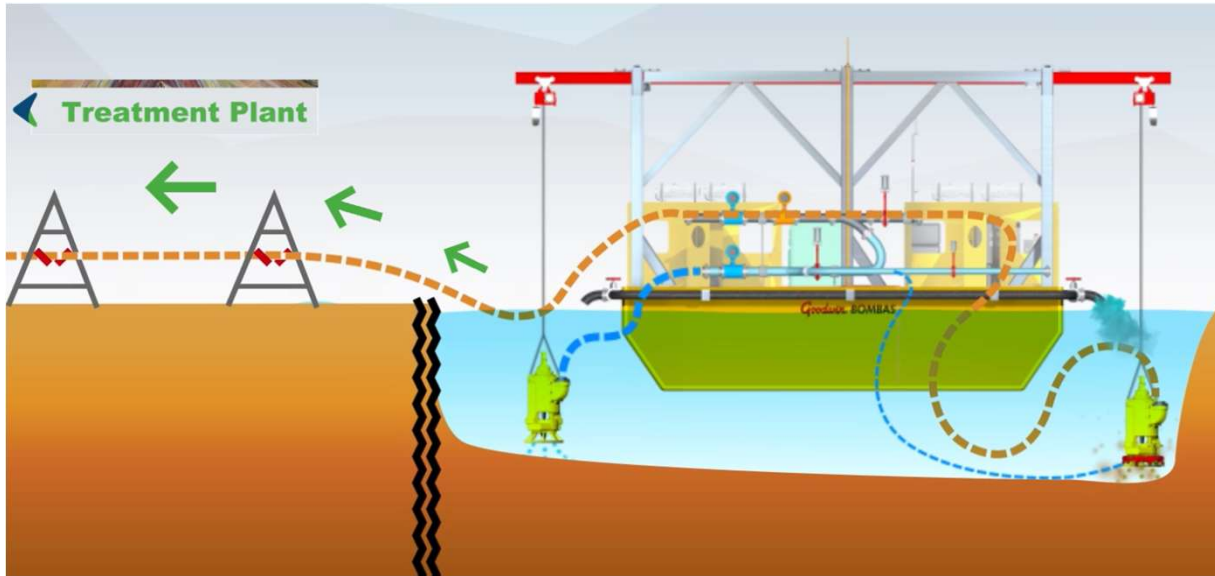
2025 CATALYSTS



Layout of the Phase 1 drilling campaign, completed in 2024, and the planned Phase 2 drilling campaign for 2025.

- » Results of remaining Phase 1 drillholes
- » Mineralogical studies
- » Metallurgical studies
- » Formalization of claim on surrounding tailings
- » Expanded Phase 2 drilling program on the Cu-Ag-Au tailings
- » Completion of various site scoping studies:
 - » Geotechnical stability
 - » Hydrogeology & hydrology
 - » Environmental baseline
 - » Infrastructure trade-off
 - » Logistics and marketing study
 - » Assessment on mining methods

MOVING QUIULACOCHA TAILINGS BY PUMP PONTOON



Onboard propulsion system using Goodwin Pumps and Intelligent Control System



Pumping Capacity
10,000 tpd

Jets displace settled solids to allow transfer of materials by onboard pumps

Working Day and Night

CERRO DE PASCO POST CLOSURE (ARTISTIC RENDERING)



CORPORATE OVERVIEW

CSE: **CDPR** OTCQB: **GPPRF** FRA: **N8HP**

SHARE STRUCTURE

Shares Outstanding	491.3 M
Options Outstanding	21.3 M
Warrants Outstanding	171.9 M
Fully Diluted Shares Outstanding	684.5 M
Market Capitalization (Jan. 7, 2025)	~CAD 150 M

SHARE OWNERSHIP

Management & Directors	14.5%
Eric Sprott	16.7%
Denis Lavigueur	5.0%

MANAGEMENT TEAM



MANUEL RODRIGUEZ
President and Director

30+ years of management and investment experience in the Peruvian mining sector, including SM Austria Duvaz with over 700 workers.



STEVEN ZADKA
Executive Chairman

Founding partner of CDPR with 15+ years of transactional and executive management experience in Latin America, USA and Canada.



GUY GOULET
Executive Director and CEO

30+ year track record of investment in the mining sector, leading numerous listed ventures in Canada and internationally.



JAMES CARDWELL
Chief Financial Officer

Mr. Cardwell has CPA credentialed with over 30 years of C-level experience supporting numerous international clients across various industries.



PYERS GRIFFITH
Chief Strategy Officer

30+ years of LATAM investment and management experience, held senior positions in private equity and corporate finance.



PROF. DR. BERNHARD DOLD
Chief Technology Officer

Professor with 25+ years of experience in sustainable mining with special emphasis on Peru (Cerro de Pasco) and Chili.

BOARD OF DIRECTORS



STEVEN ZADKA

Executive Chairman / Member of the Audit, Governance and Compensation Committees

Founding partner of CDPR with 15+ years of transactional and executive management experience in Latin America, USA and Canada.



GUY GOULET

Executive Director and CEO

30+ year track record of investment in the mining sector, leading numerous listed ventures in Canada and internationally.



JOHN G. BOOTH, LL.M.

Lead Independent Director / Chair of Audit and Governance Committees

30+ years of international experience in finance, law, ESG and corporate governance of natural resource management, serving on the boards of several listed companies.



EDUARDO LORET DE MOLA

Independent Director

35 years of experience in executive and management positions in the operations area, planning and commissioning of mining extraction and exploitation projects in Peru and abroad, in multinational and national mining companies.



MANUEL RODRIGUEZ MARIÁTEGUI

Executive Director and President

30+ years of management and investment experience in the Peruvian mining sector, including SM Austria Duvaz with over 700 workers.



JOHN SCOTT CARR

Independent Director

John S. Carr is a chemical engineer and co-founder of New Century Resources, leading the restart of the Century Zinc Mine in Australia, now one of the world's top 15 zinc producers. He also co-founded Future Element and Broken Hill Mines and serves as a Non-Executive Director of Future Metals NL (ASX).



RENÉ BRANCHAUD

Independent Director

Partner at Lavery, deBilly, L.L.P., a law firm. He has been a lawyer for more than 35 years. He is also a director or secretary of several mining listed companies.



FRANK HODGSON

Independent Director / Member of the Audit and Governance Committee

30+ years of international experience in finance, law, ESG and corporate governance of natural resource management.



**CERRO DE
PASCO**
RESOURCES

CONTACT US

205-68 de la Gare Av
Saint-Sauveur, Québec
J0R 1R0, CANADA
+1.579.476.7000

CSE: **CDPR** OTC: **GPPRF** FRA: **N8HP**
PASCORESOURCES.COM

